



DIS 417

Ambar Hernández

Profesor/a: Lorena Ramos

P R O C E S O D E D I S E Ñ O

RAPPORT.





### **Bolsa**

Autoría desconocida

Proveniente de Oriente.

Objeto traído del Museo Nacional de Historia  
Natural en 1911

Tapicería de varios colores.

MHN 3-32606

**PIEZA  
SELECCIONADA**



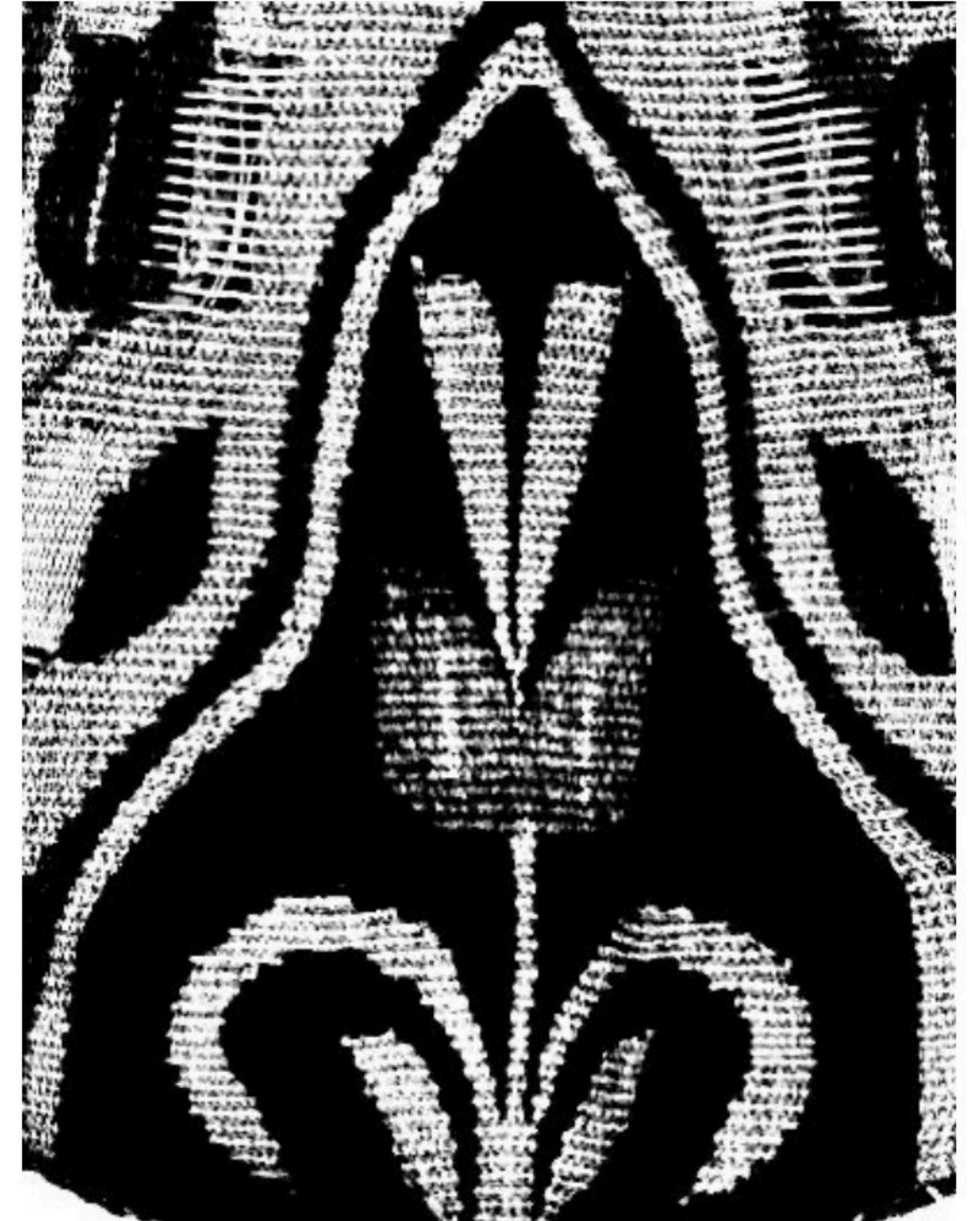
**DETALLES**

a color

# DETALLES

Blanco y negro

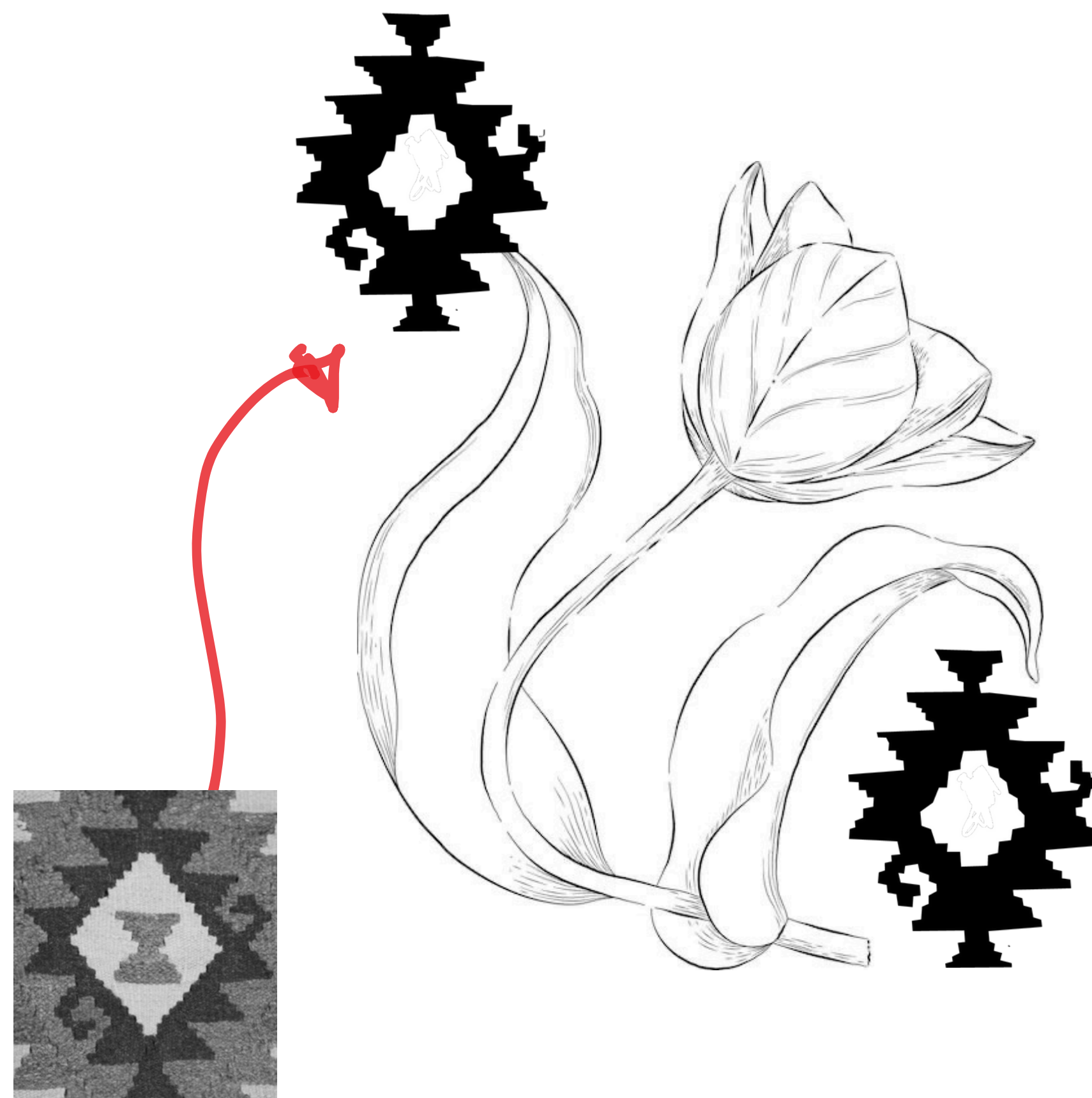
Referencia:  
Tulipanes



# BOCETOS Y REFERENCIAS

Primeras ideas

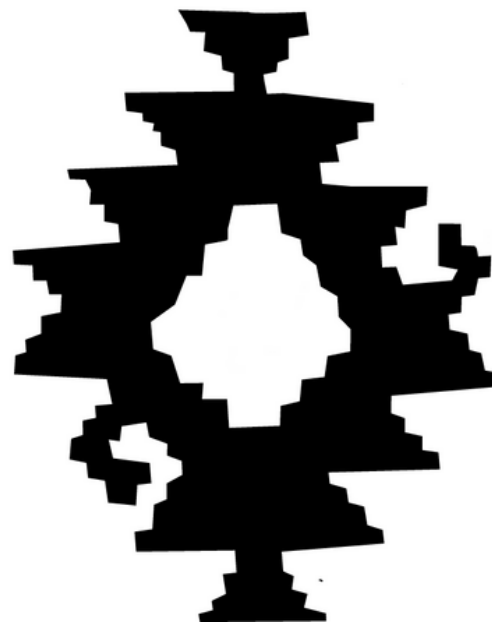
Se inspira primeramente en los tejidos y los tulipanes, manteniendo los elementos botánicos y el movimiento de sus hojas. Además, incorpora un patrón cuadrículado que hace referencia directa a un bordado característico del tejido presente en este saco.



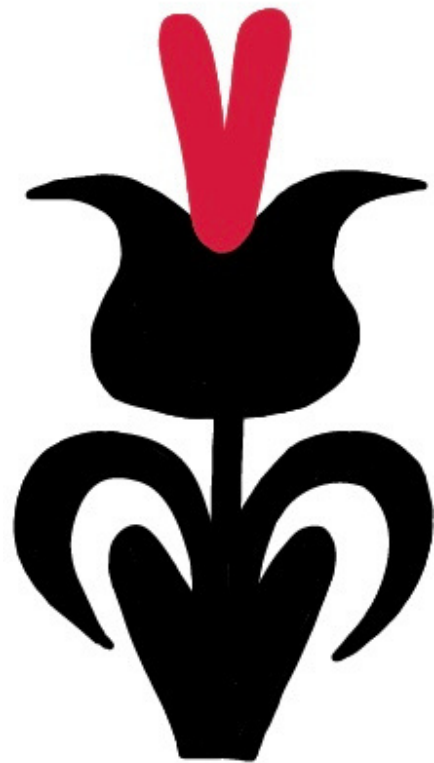
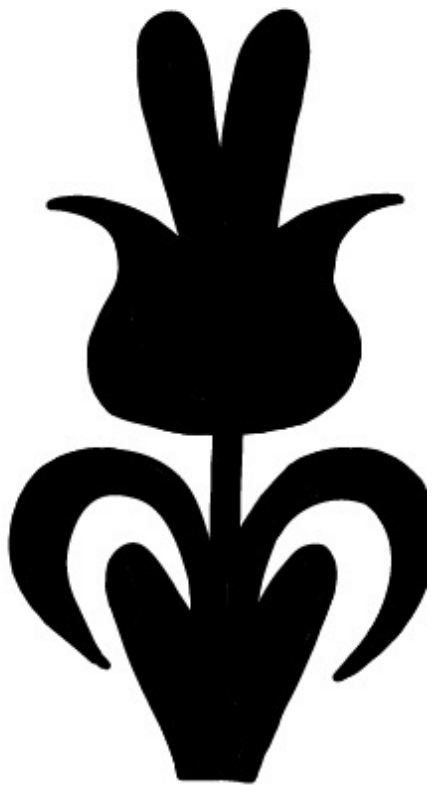
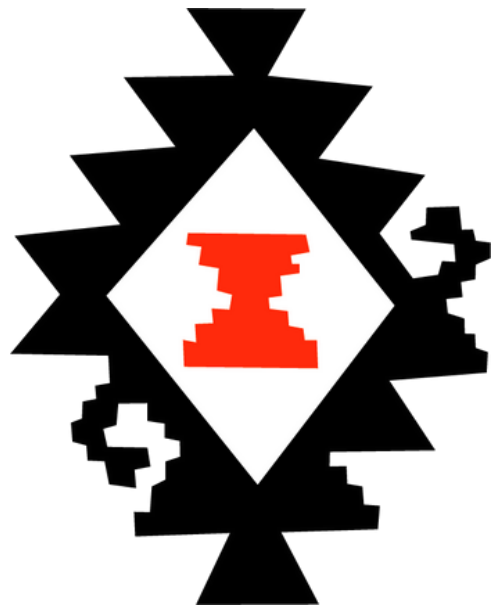
# PRIMEROS BOCETOS

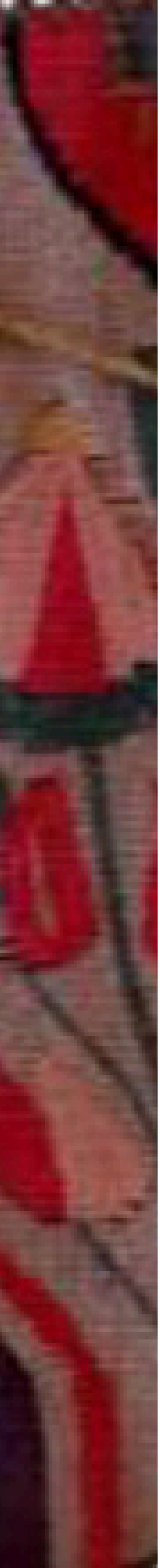


1.



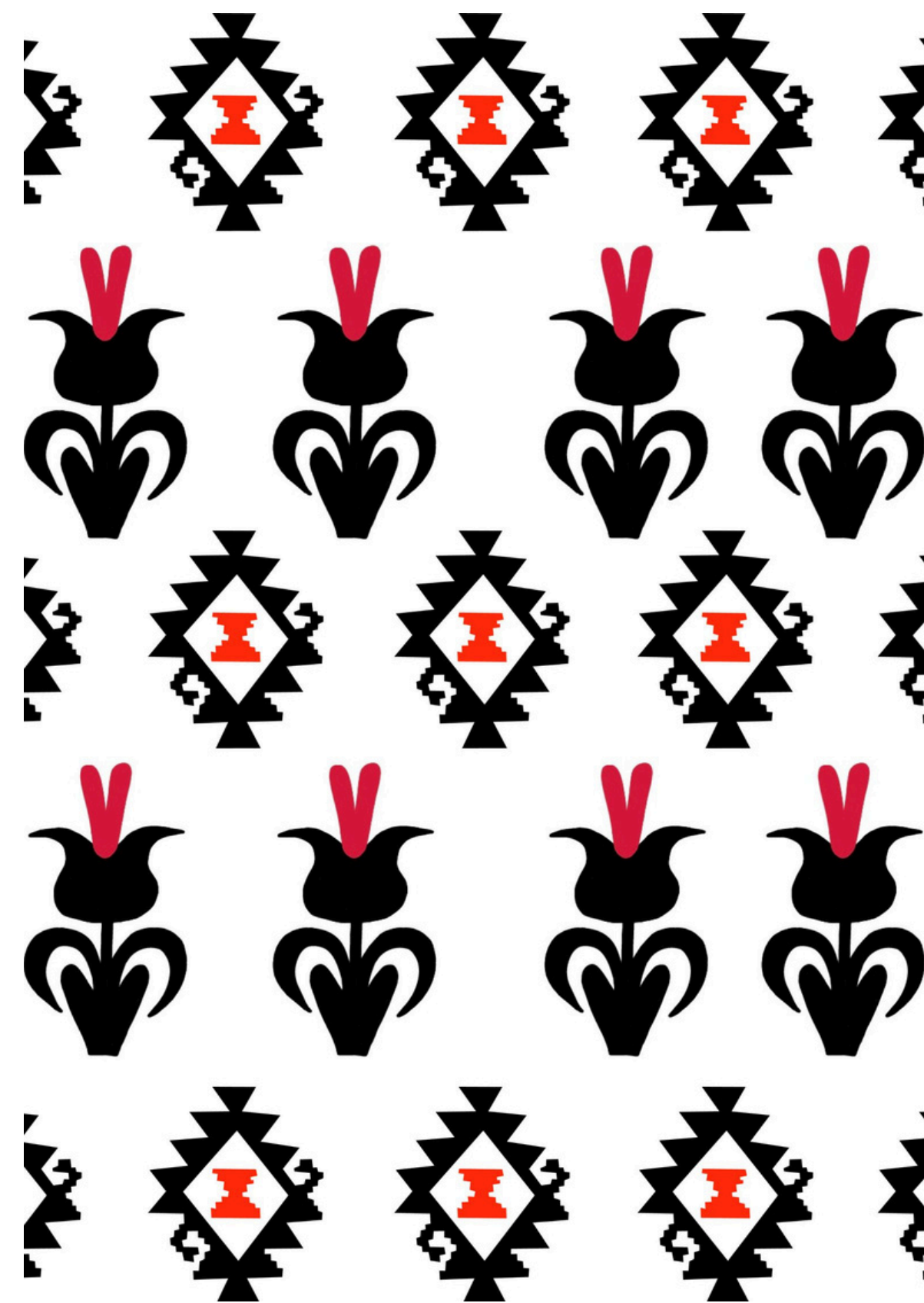
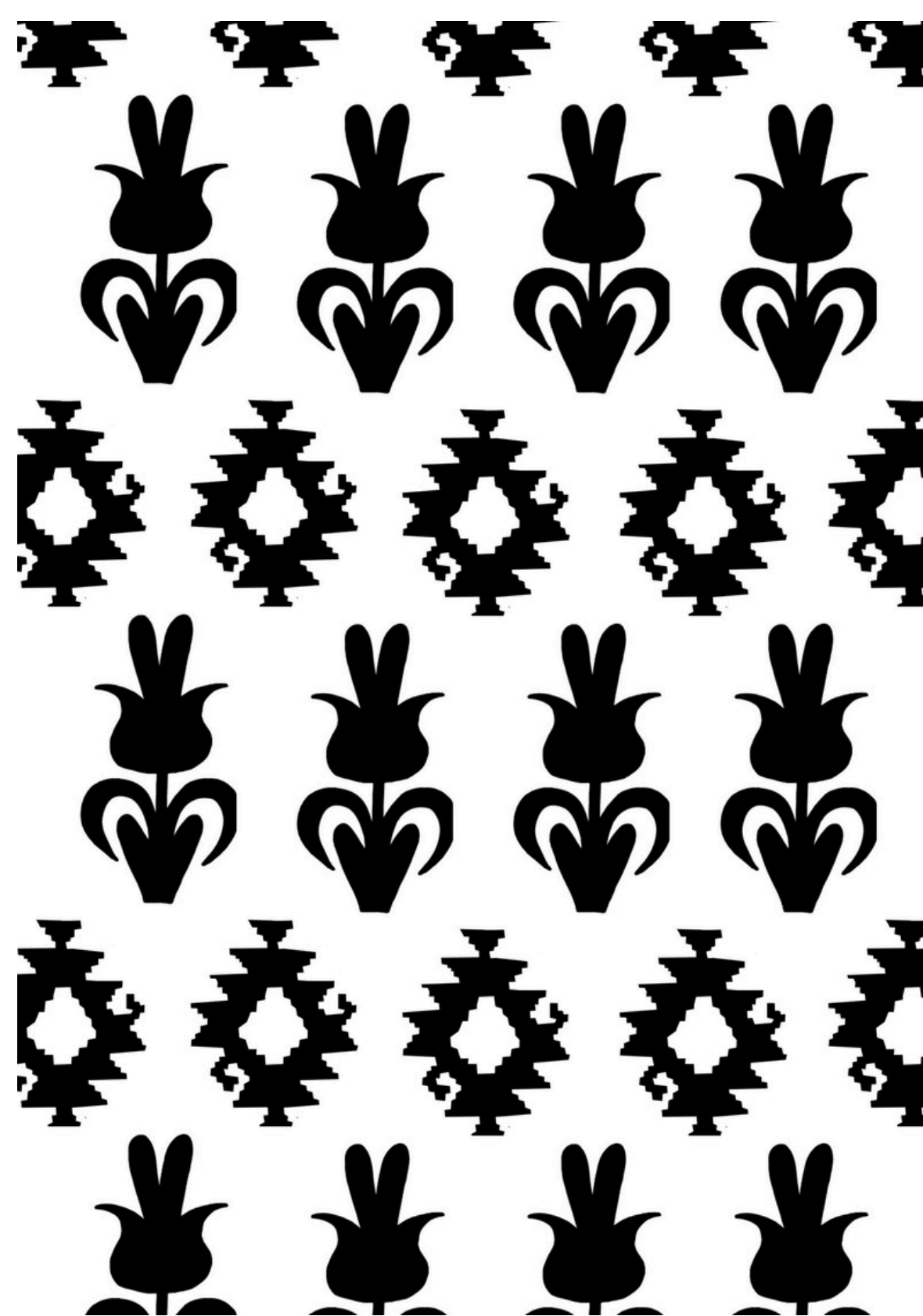
2.





# RAPPORT 1

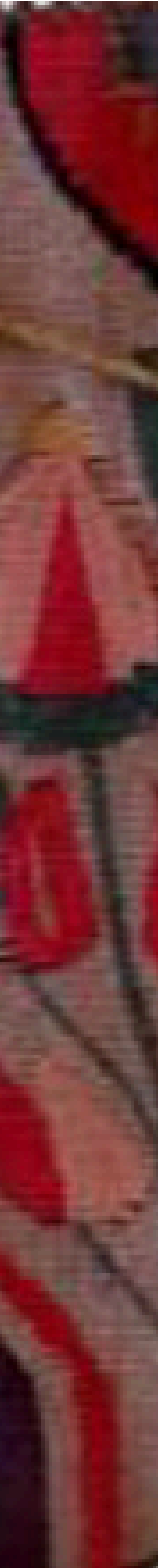
Experimental



**DISEÑO RAPPORT  
FINAL**

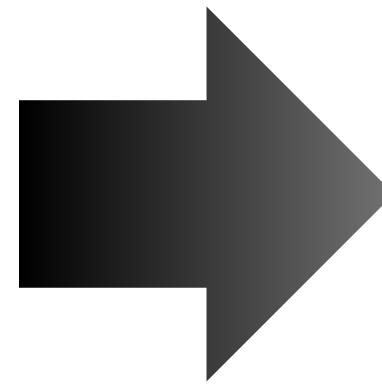
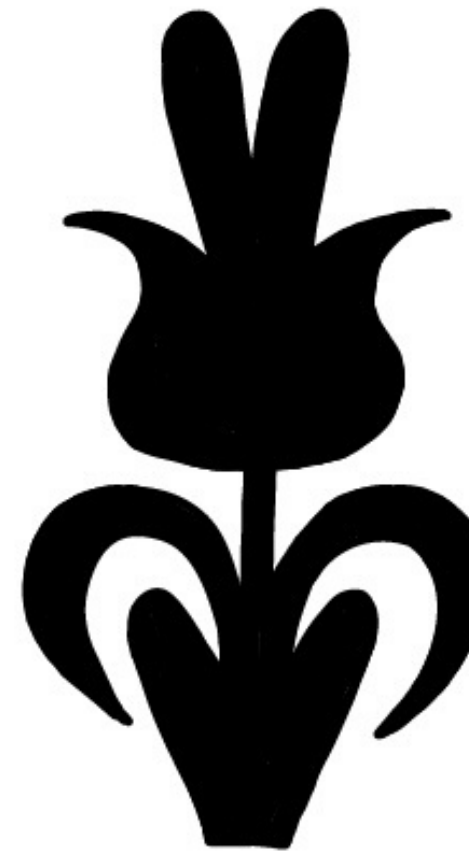
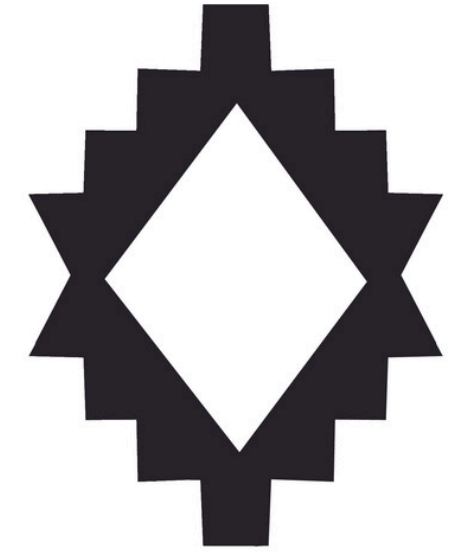
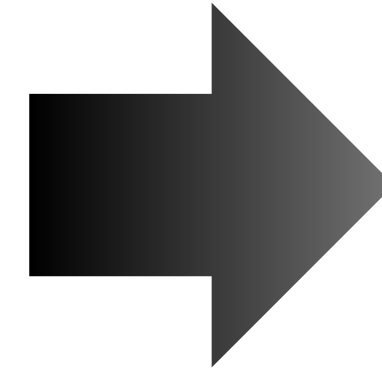
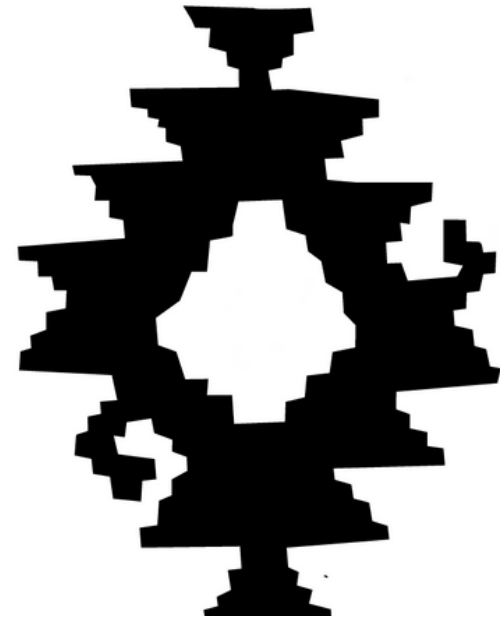




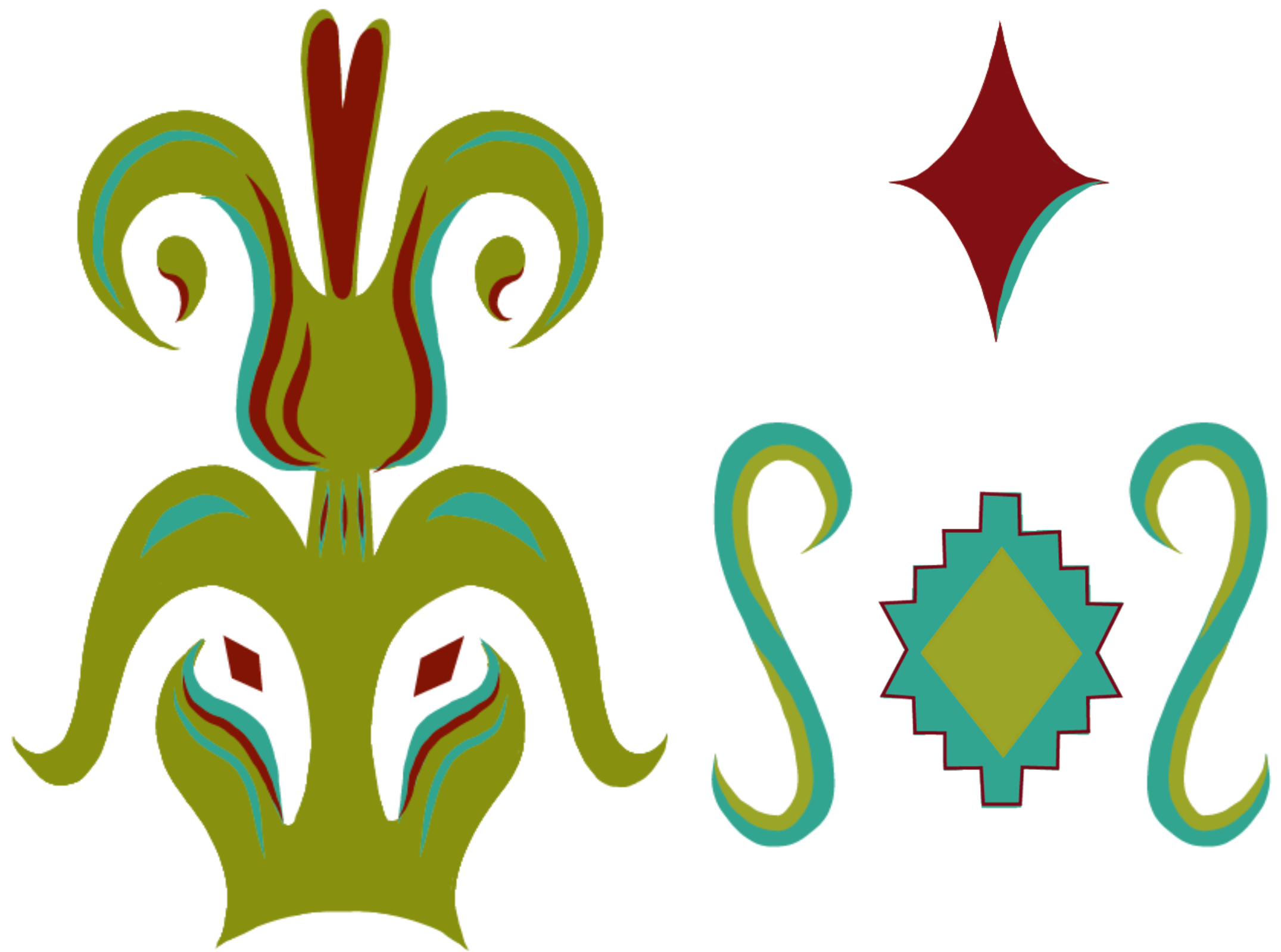


# EVOLUCIÓN DE BOCETOS

Bocetos base para el  
rapport diseñado

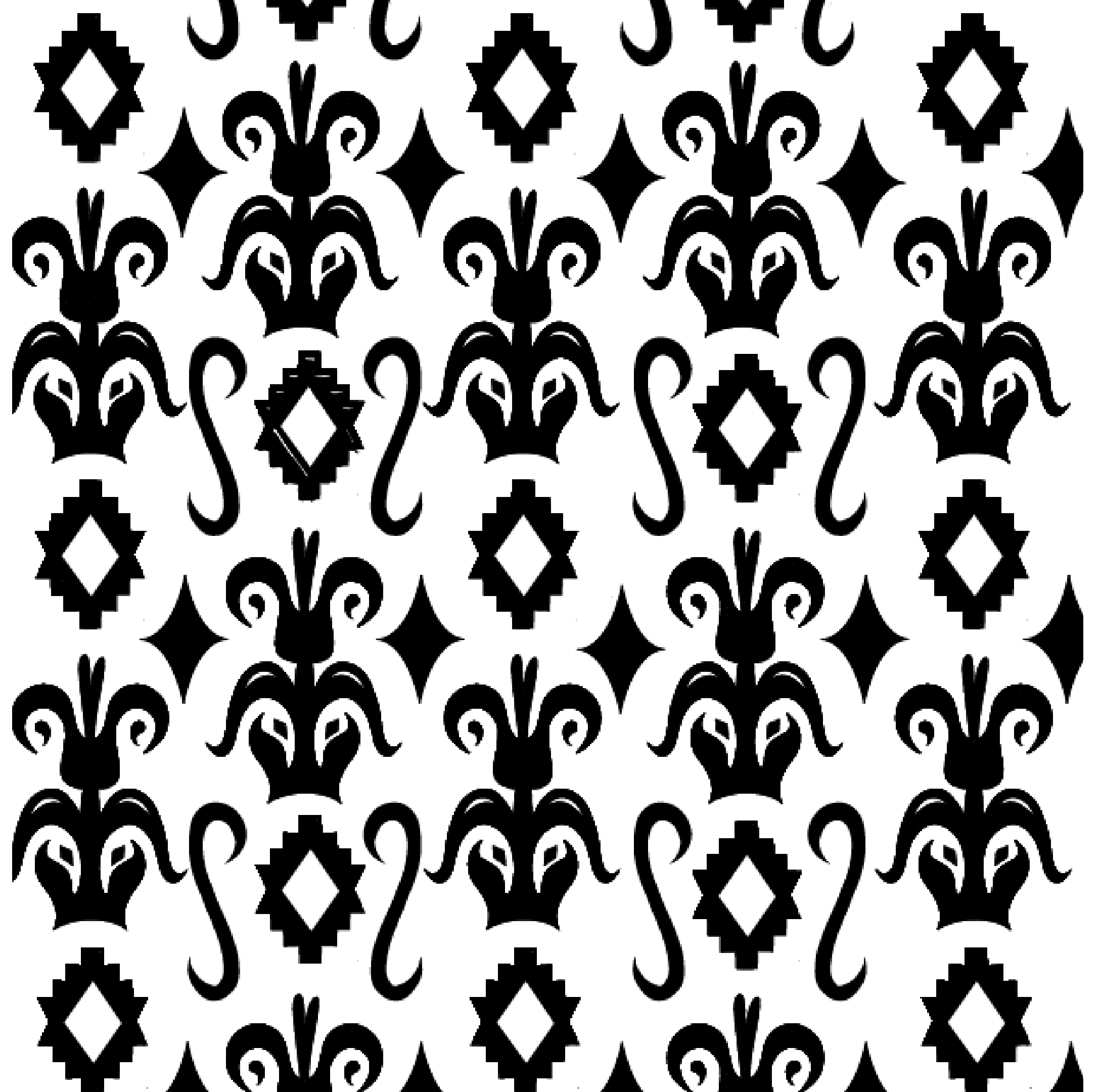


**BOCETOS**  
**FINAL**  
A 3 colores



# RAPPORT FINAL

A 1 color



# RAPPORT FINAL

A 3 colores

